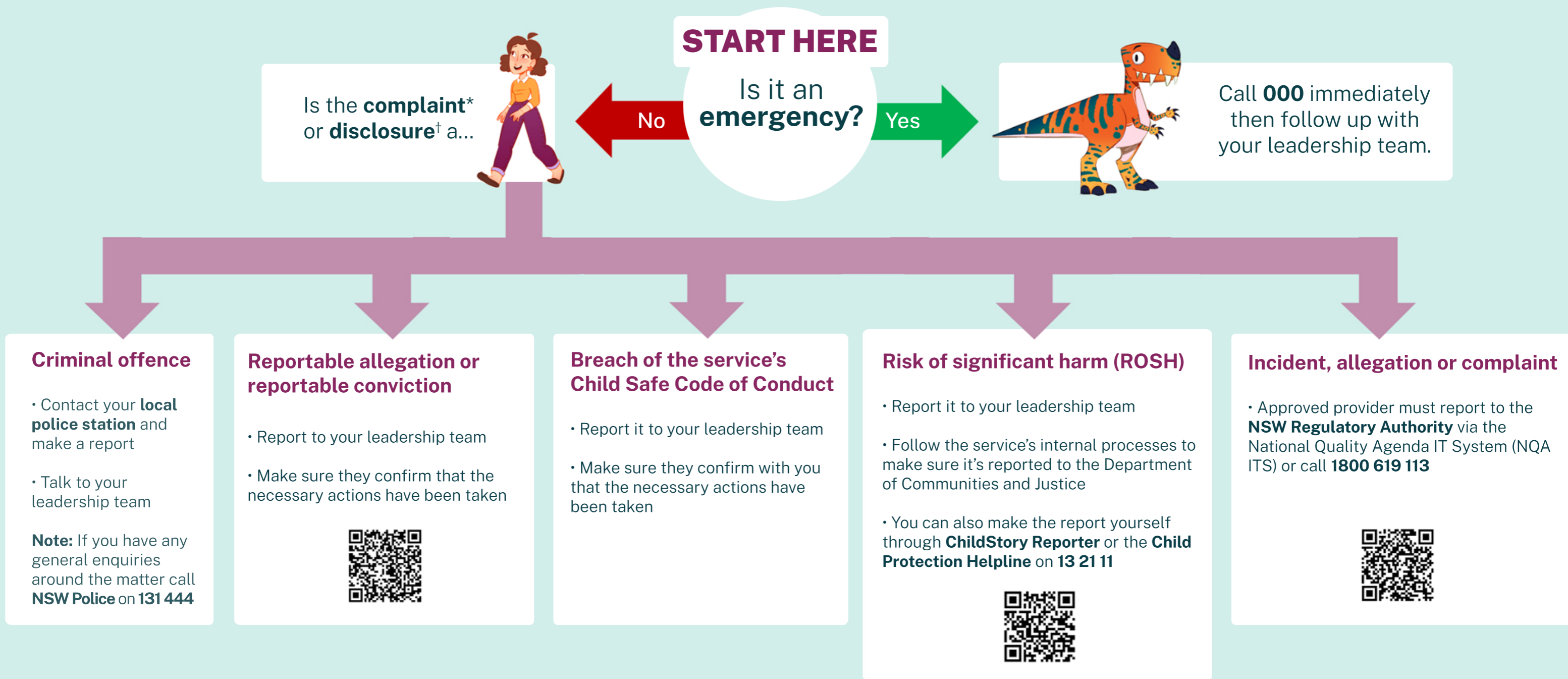




Early Childhood Education and Care Reporting Obligations Map (for educators)

Regardless of what type of report it is, always make sure any child involved is out of harm's way. If you are unsure of what type of report it is ask your leadership team for guidance. Remember, you may have to notify several relevant authorities of the one incident.



*In a child safe context, a complaint is any allegation or suspicion that a child has been harmed or abused.

†A disclosure is when a child reveals they have been harmed or abused. Disclosures can be direct – a child is clear about wanting to let an adult know about the harm or abuse, or indirect – a child doesn't intentionally reveal the harm or abuse, or they disclose in a piecemeal way.

